



JOYWELL

MODULAR UNIT

Director: David Tao

Email: junqingtao@vip.163.com / info@junyinmarine.com

Web: www.junyinmarine.com

Mob: +86-15190329088 Phone: +86 510 86659088

Office: Room 818, No 288 Huangshan Road, Jiangyin, Jiangsu, China

Cabin Unit System

INTRUCTION OF CABIN UNIT

Cabin Unit is a kind of prefabricated cabin rooms consisting of paneling, fire door, wet unit, furniture, electrical equipment, curtains and hardware.

1. Cabin Unit can reduce the mess of construction, such as cross operation, rework and second decoration, etc.
2. Personalized design and industrialized manufacture
3. Easy to install and shorten the construction cycle to reduce the berth holding time
4. Cut the cost of ship building
5. Reliable structure, flexible configuration, green, energy saving and sound insulating

Cabin Unit are mainly used for construction of accommodation cabin of cruise ships, passenger ships, marine floating hotels, etc.



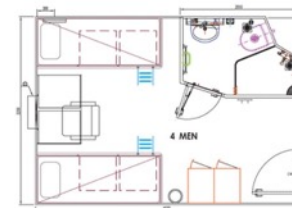
ONE MAN ROOM



TWO MEN ROOM



FOUR MEN ROOM



CONSIST OF CABIN UNIT

1. STORAGE

The Cabin Unit shall be stored in the warehouse with roof to avoid direct sunlight or rain damage

The Cabin Unit must not be placed in the environment involving iron power or corrosive substance. Bathroom Unit pipe outlet be sealed properly, piping outlets shall be sealed to avoid small granular material go into the piping system.

When the Cabin Unit is stored, reasonable distance is needed to avoid scratching or extruding damage. Nothing is allowed to put on top of the Cabin Unit.



INSTALLATION OF CABIN UNIT

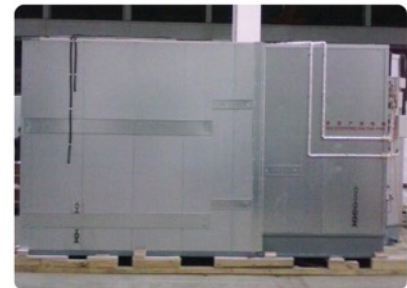
2. INSTALLATION PREPARATIONS

- Steel windows installation
- Cable and junction box installation
- Pipe installation and tight test finished
- The floor engineering and coating for steel bulkhead finished
- Installation laying
- Floor cleaning
- Precise cabin positioning



3. DELIVERY

- Remove the protection cover
- Carry the cabin close to the hoisting equipment



3. HOISTING

- Remove the packing and wooden pallet before hoisting
- Use the crane to move the cabin to the hoisting area
- Hoist on the ship



Accommodation Platform



Boeing Box



Cabin for Cow



Cabin for Cylinder



Cabin Unit

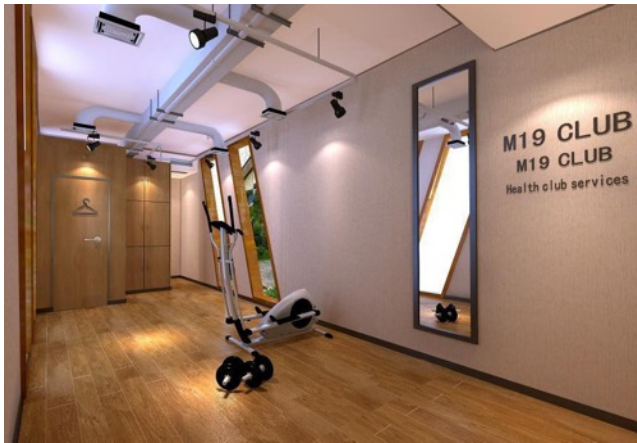
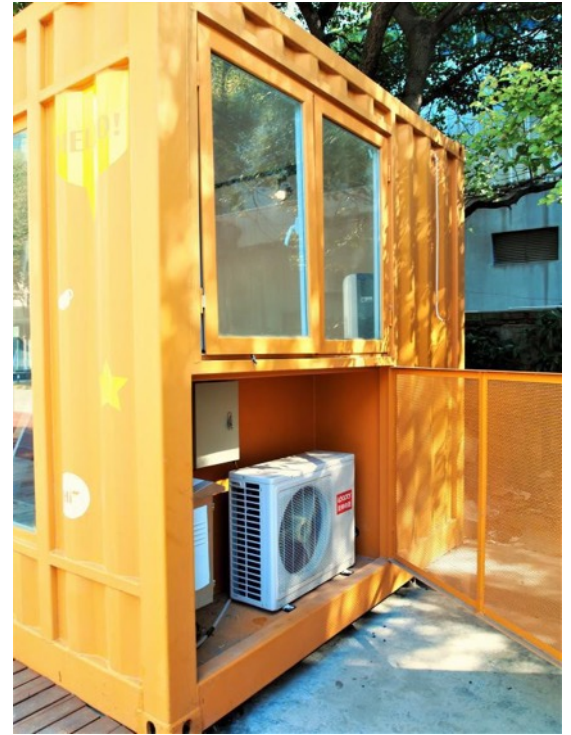
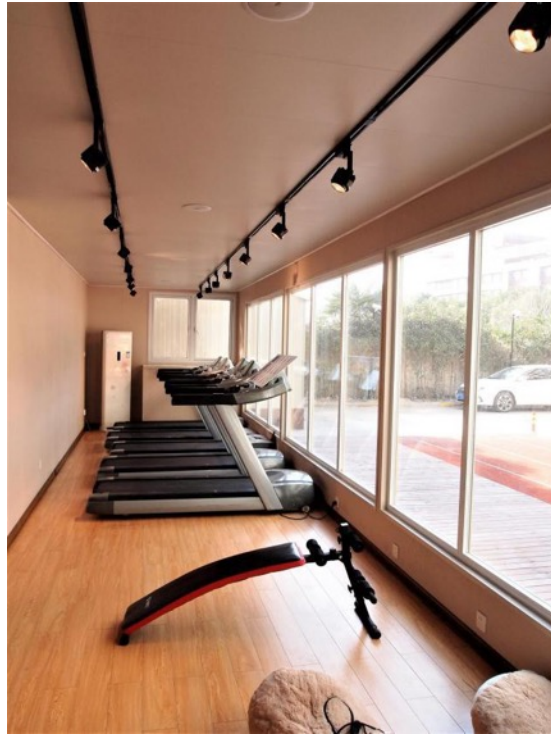


Cabin Unit





LINKER GYM Project

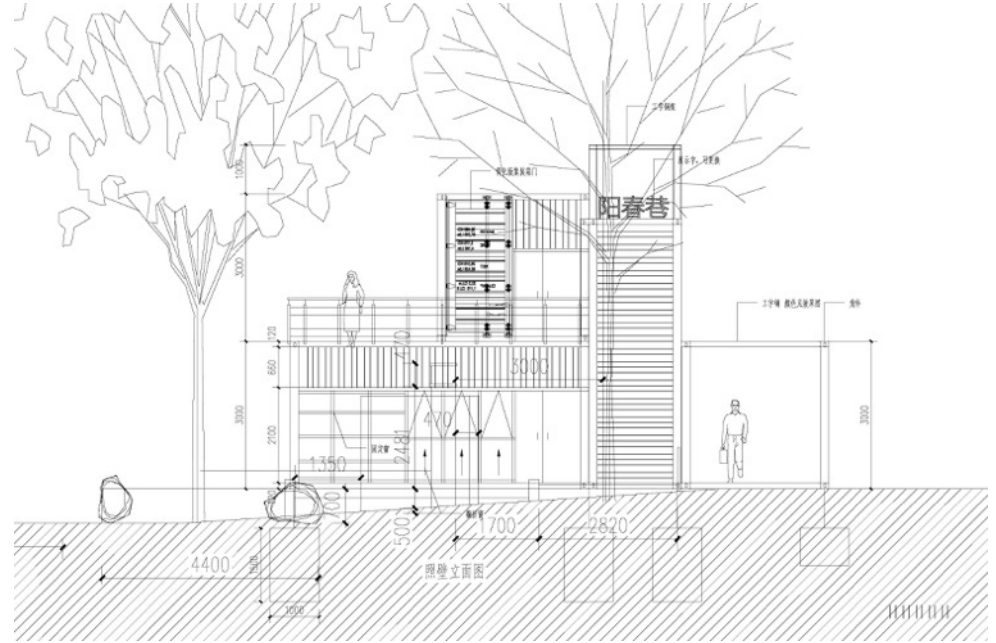
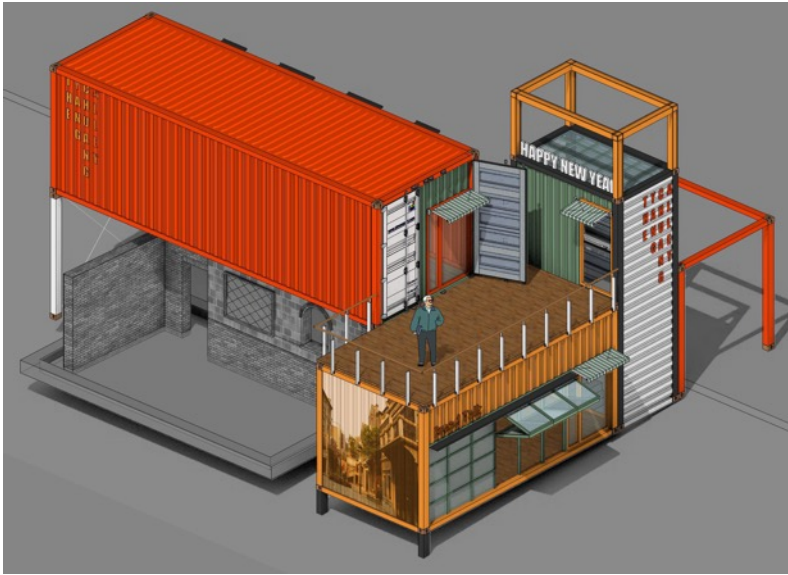


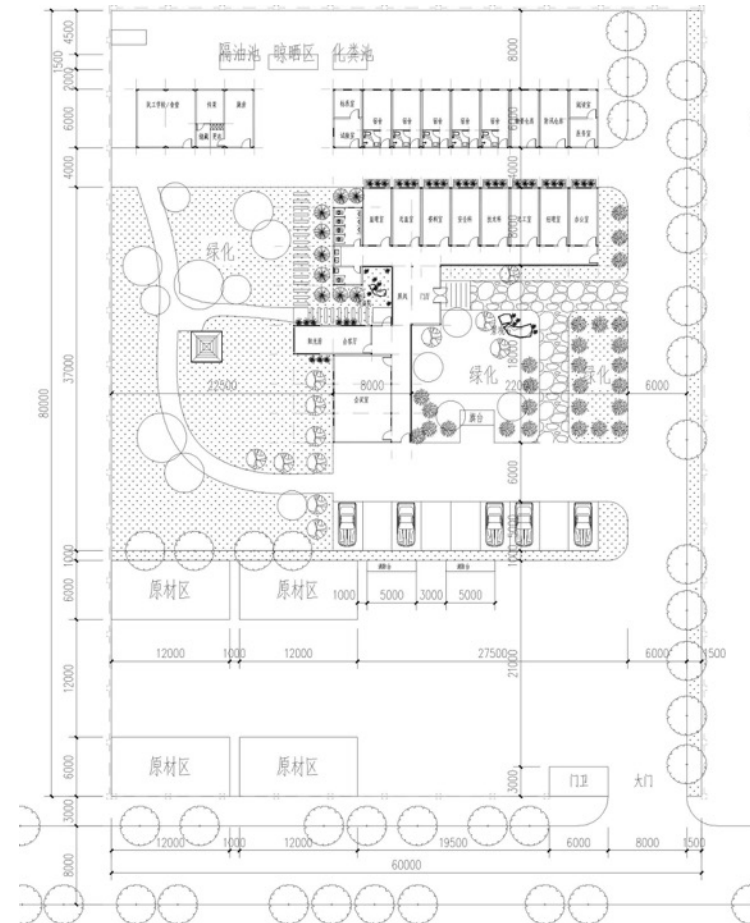
Living Cabin Unit



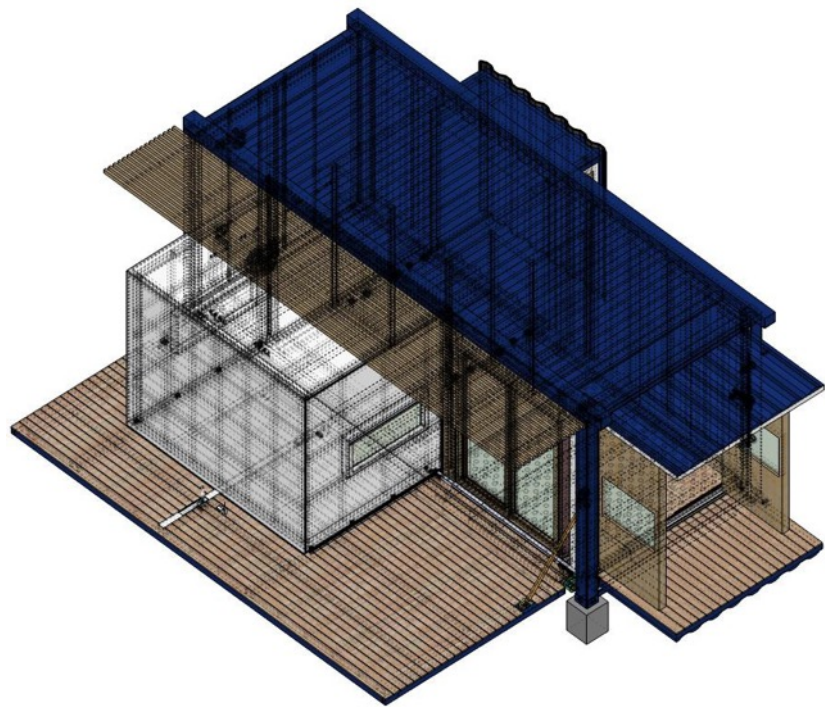
Cabin Unit System

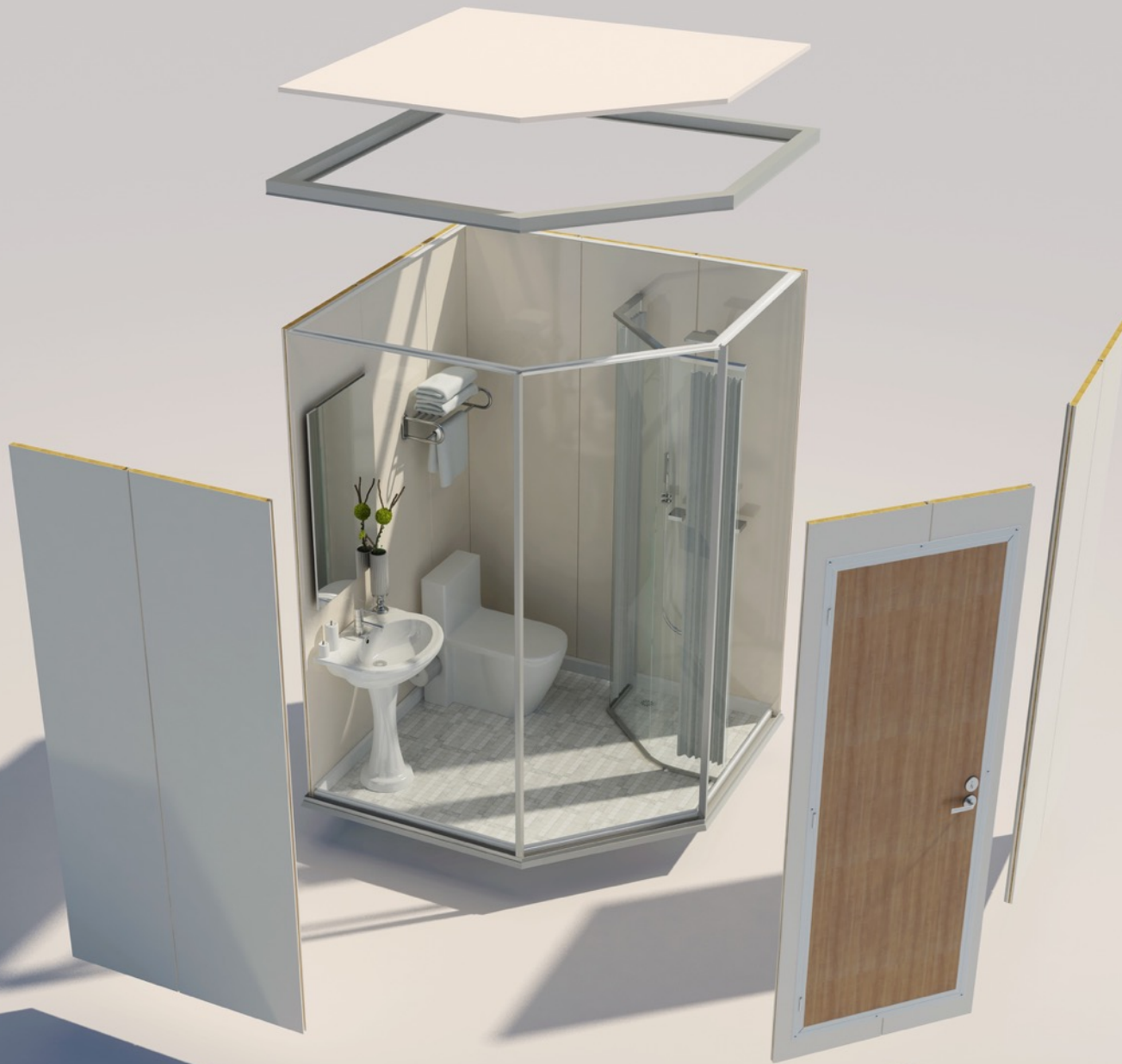
Container Cabin Unit





Removable & Extensible Cabin Unit





Sanitary Units

Scupper	Stainless Steel
Grey Water Pipe	Inner Dia Φ 50mm Outer Dia Φ 60mm
Fresh Water Pipe	Copper Pipe Outer Dia Φ 14mm
Connection	B.S.P.1/2"
Electrical Cable	Marine Cable 3x1.5mm
Conduit Pipe	Rubber tube with cloth interlayer
Door Hinge	Stainless Steel Flag Hinge 5"

The Structural Features for Sanitary Units can be divided into three types: Common Type, Light Type and floor heater Type. It can be characterized with prefabricated, lightweight, fastness, layout reasonable and changeable. External size of sanitary units could be changed widely so that to meet all circumstance.

Sanitary Units

Examples of standard types



Type A

Ceramic tile, Steel base plate



Type B

Ceramic tile, Steel base plate



Type C

Ceramic tile, Steel base plate



Type D

Epoxy coating, Floor heating system, Steel base plate



Type E

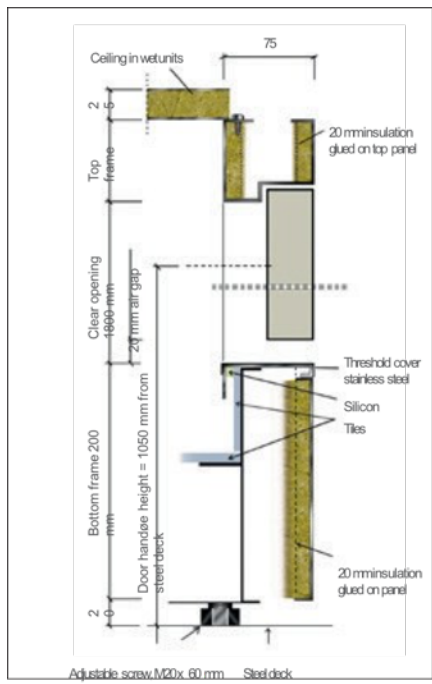
Epoxy coating, Steel base plate



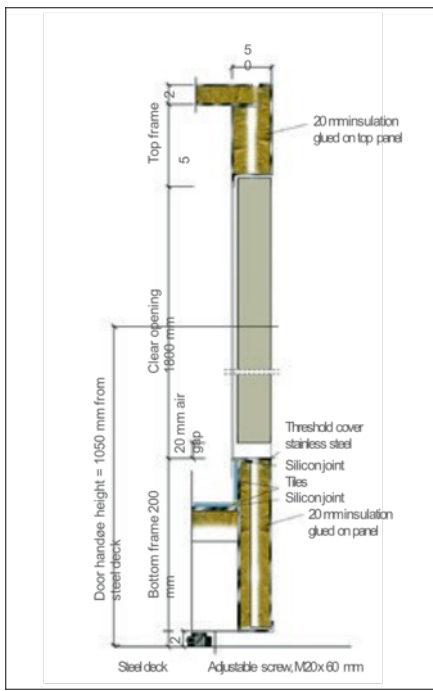
Type F

Ceramic tile, Steel base plate

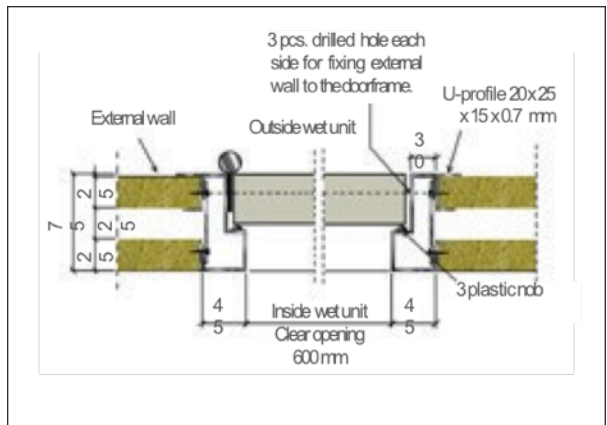
Technical Detail



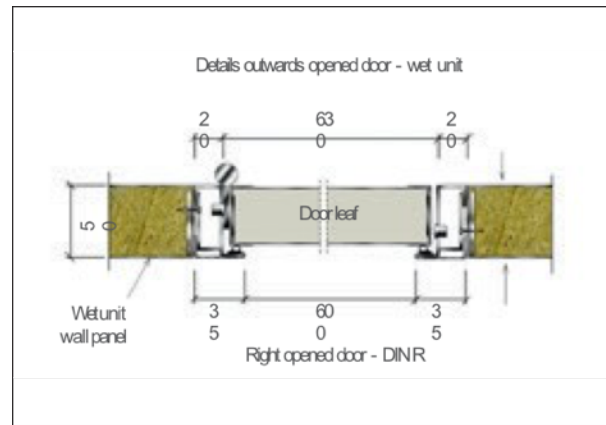
Door in single wall



Door in sandwich wall

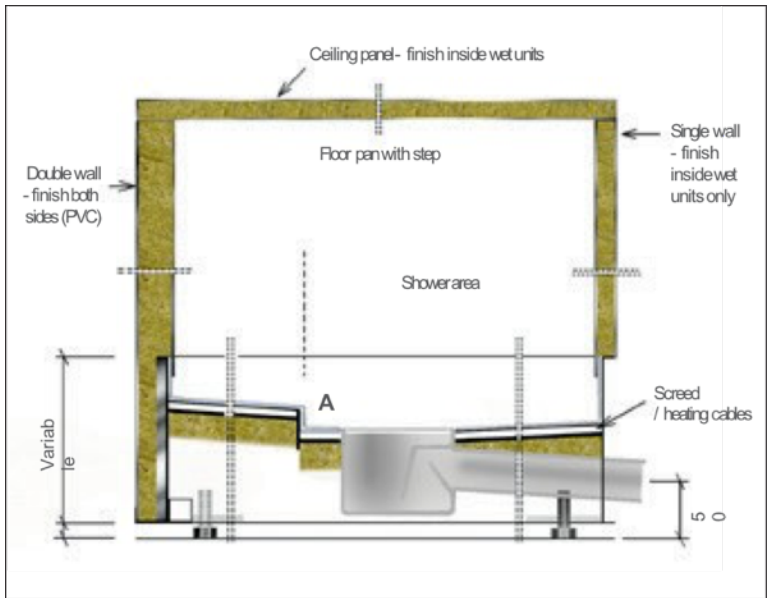


As standard the external linings slide into the door frames

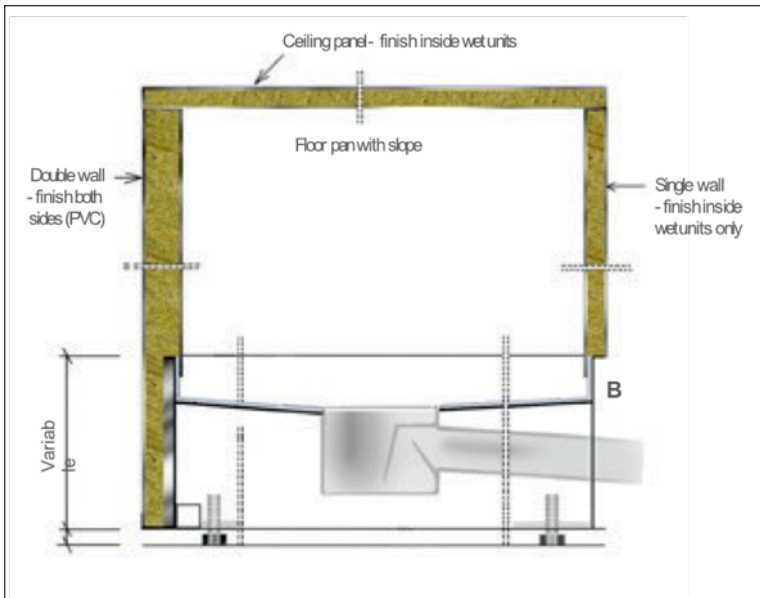


Wet units can be supplied with the cabin side having a finished surface as shown above

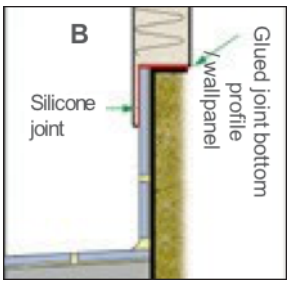
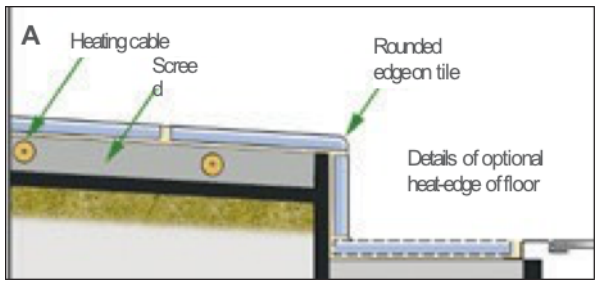
Technical Detail



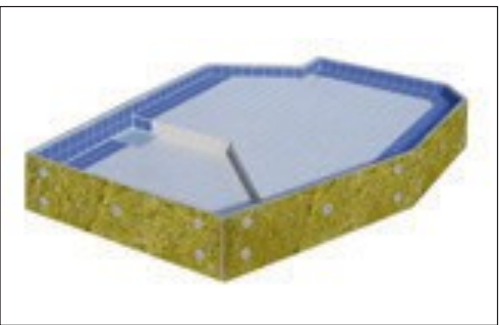
SOLUTION FOR HEATING CABLE AND / OR STEP



STANDARD SOLUTION FOR TILED FLOOR

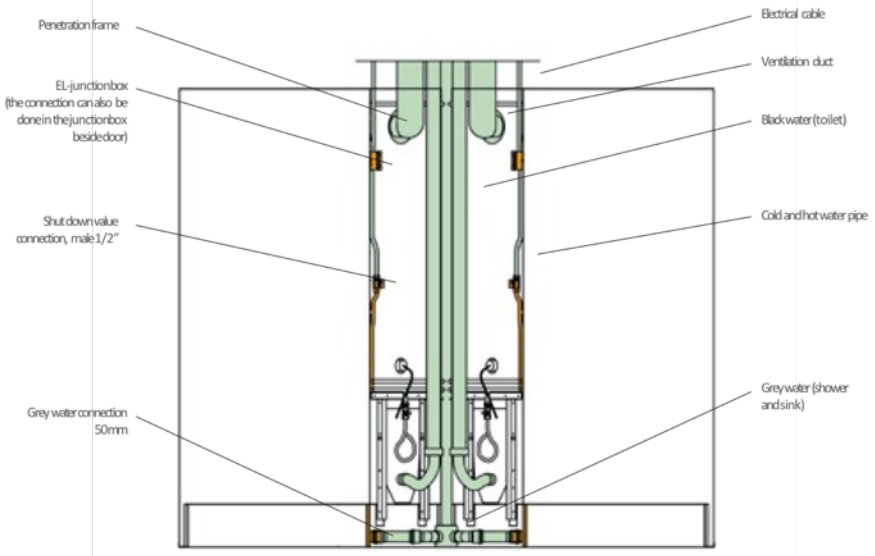
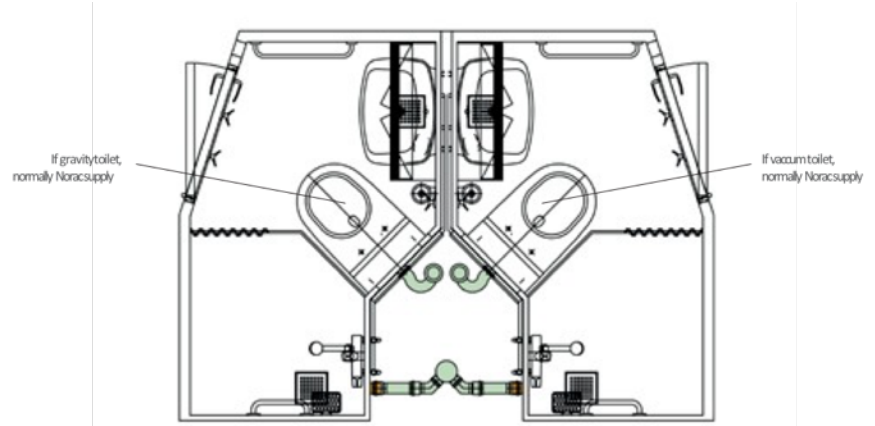


B-15 class in both steel and aluminium constructions.

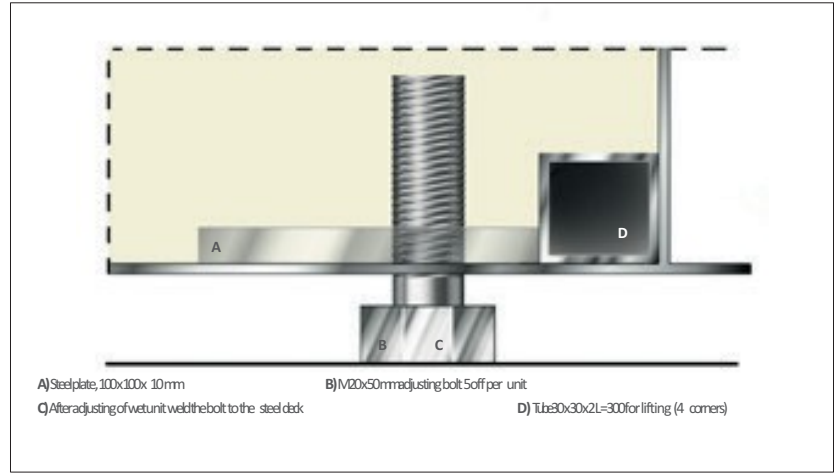


The floor pan is fully tested water tight, blasted and primed before application of finish

Technical Detail



Interface responsibility
 Green = Yard supply
 Orange = Factory supply



Wet units are easy to handle and locate on board

Sanitary Units

Standard Equipment/Accessories



WC



Operator



Cistern (especially made for ships)



Wash-basin



Toilet paper holder



Spare paper holder



Toilet brush and holder



Showerset



Showermixer



Toilet cabinet



Grabrail



Doublehook



Hook



Mixingtap



Folding seat



Light fitting, 1x18W with razor socket 110/ 220V IP44



Towel rail (all in length 30- 45- 60cm)



Soap holder

Product Catalogue



One-sided PVC unit



Two-sided PVC unit



Brings the Instant water heater unit

Built-In Class



Unit Production Class



▲ Unit finished



▲ Chassis semi-finished products



▲ Chassis tiling



▲ Chassis Production

Test Loading



▲ Brick strength test



Chassis seep experiment ▲



▲ End product load



Exports in Singapore ▲

