



PANEL & DOOR

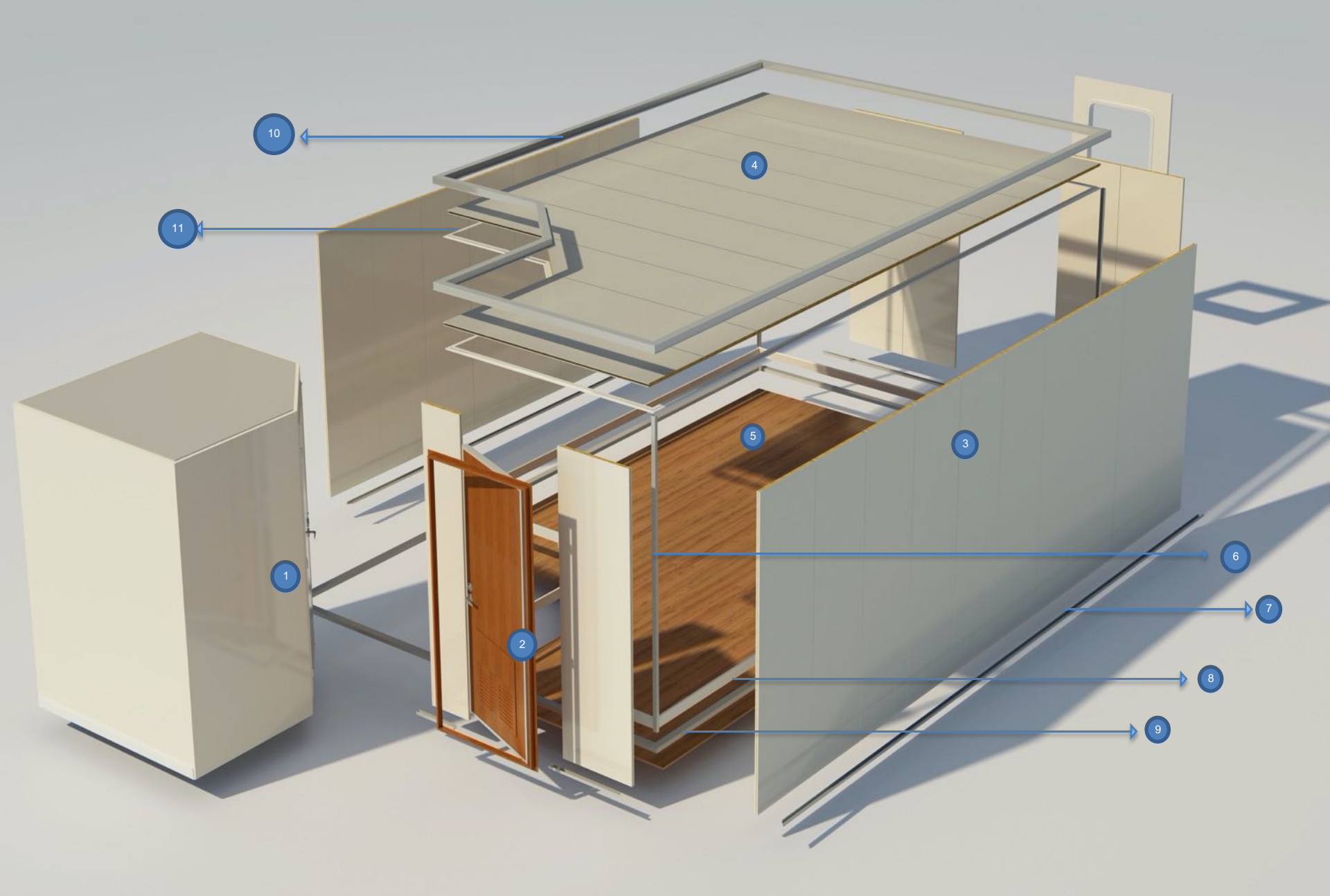
Director: David Tao

Email : junqingtao@vip.163.com / info@junyinmarine.com

Web: www.junyinmarine.com

Mob : +86-15190329088 Phone. : +86 510 86659088

Office: Room 818, No 288 Huangshan Road, Jiangyin, Jiangsu, China



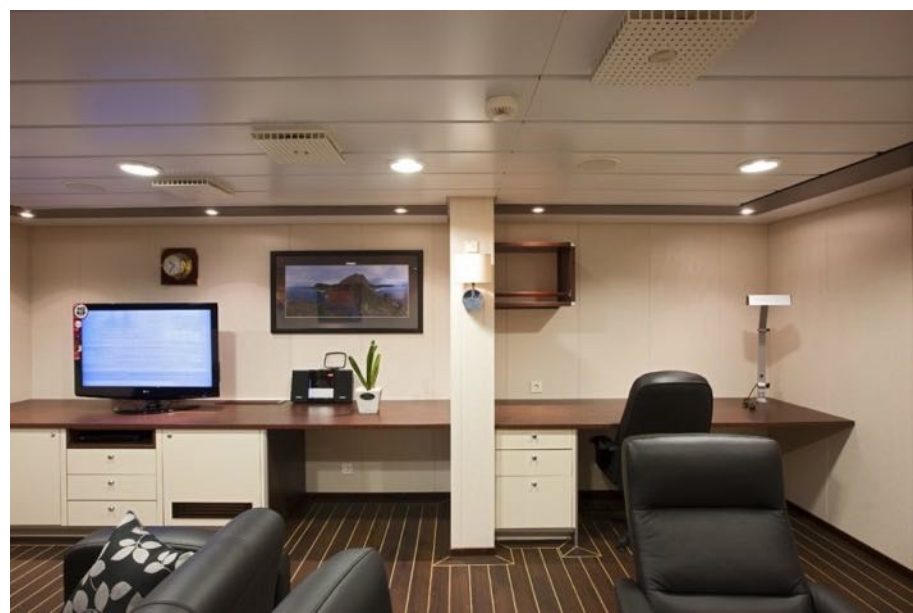
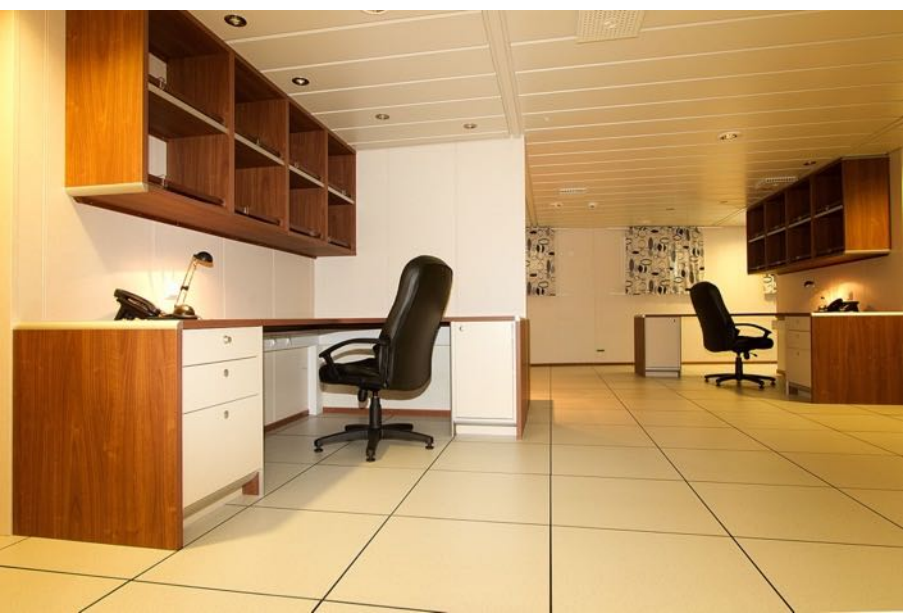
1	Sanitary Unit	2	Fireproof Door	3	Lining/Wall Panel	4	Ceiling Panel	5	Floor	6	Corner Profile
7	Bottom Profile	8	Skirting	9	Pad	10	Top Profile	11	Finisher		



C TYPE PANEL					
TYPE NO	JCP-B1	JCP-L1	JCP-B1-L	JCP-L2	JCP-L2-L
FIRE CLASS	B-15	B-15	B-15	B-0	B-0
DIMENSION	550mm Width× Required Length (Max.3000 Length)				
WEIGHT	18.4 kg/m ²	15.9 kg/m ²	17.8 kg/m ²	15.2 kg/m ²	10.9 kg/m ²
SOUND REDUCTION	35dB	33dB	33dB	30dB	30dB
THERMAL TRANSMITTANCE	0.52 Kcal/m ² h°C	0.96 Kcal/m ² h°C	2.25 Kcal/m ² h°C	1.06 Kcal/m ² h°C	3.25 Kcal/m ² h°C
SURFACE FINISH	PVC/PET/HL-3 film or galvanized				
CORE MATERIALS	Rock Wool	Rock Wool	Al honeycomb Fireproof board	Rock Wool	Al honeycomb
THICKNESS	50mm	30mm	50mm	25mm	25mm

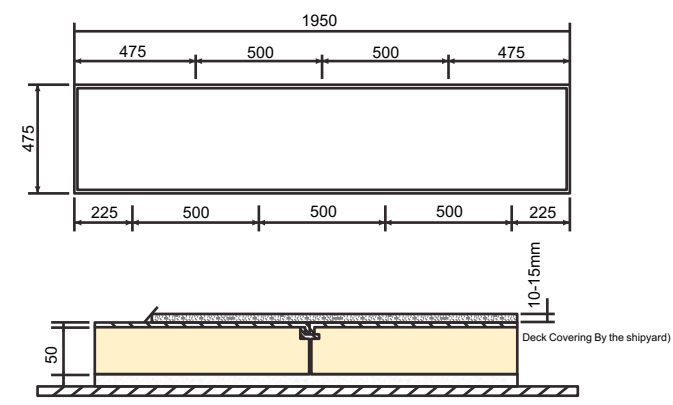
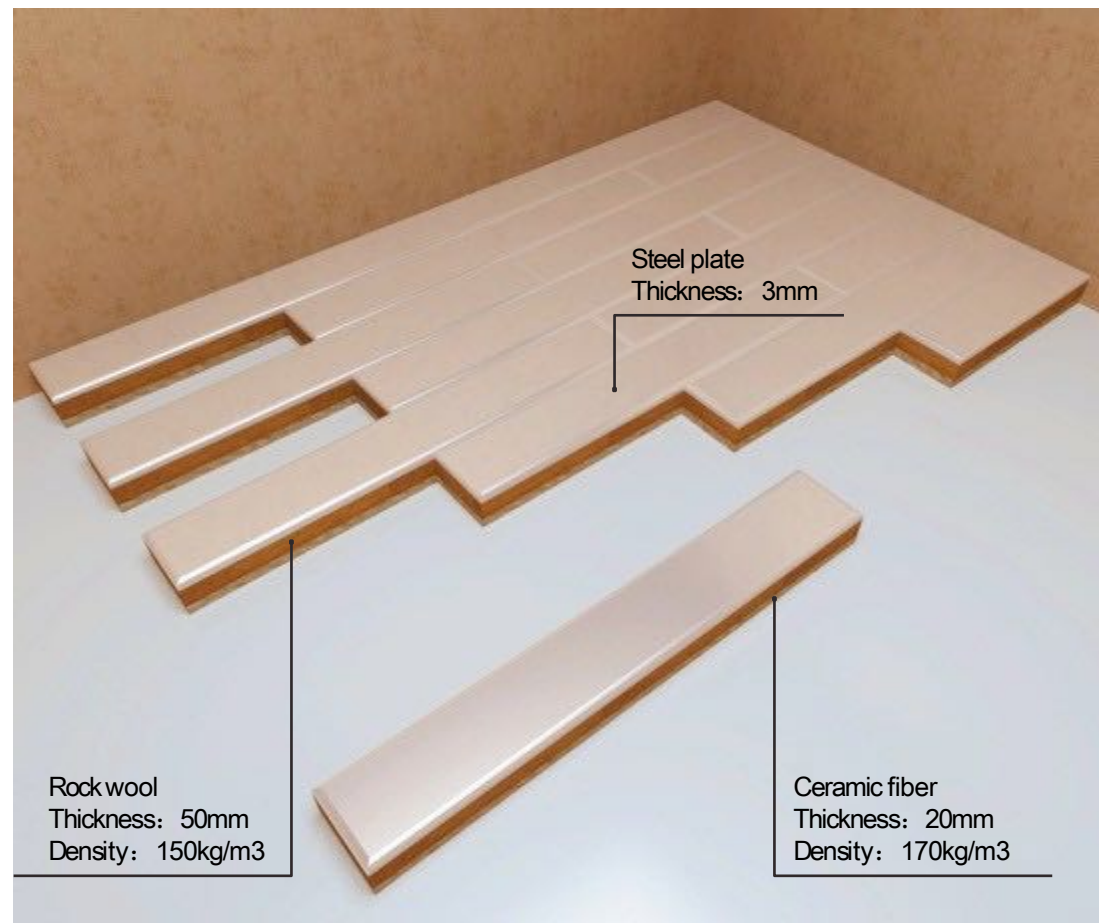


Accommodation Paneling System



A TYPE PANEL					
TYPE NO	JCP-B3	JCP-L3	JCP-B3-L	JCP-L3-L	JCP-L2-L
FIRE CLASS	B-15	B-15	B-15	B-0	B-0
DIMENSION	550mm Width× Required Length (Max.3000 Length)				
WEIGHT	18.6 kg/m ²	15.7 kg/m ²	17.8 kg/m ²	11.3 kg/m ²	10.9 kg/m ²
SOUND REDUCTION	35dB	31dB	33dB	31dB	30dB
THERMAL TRANSMITTANCE	0.52 Kcal/m ² h°C	0.50 Kcal/m ² h°C	2.25 Kcal/m ² h°C	3.25 Kcal/m ² h°C	3.25 Kcal/m ² h°C
SURFACE FINISH	PVC/PET/HL-3 film or galvanized				
CORE MATERIALS	Rock Wool	Rock Wool	Al honeycomb Fireproof board	Al honeycomb	Al honeycomb
THICKNESS	50mm	25mm	50mm	30mm	25mm



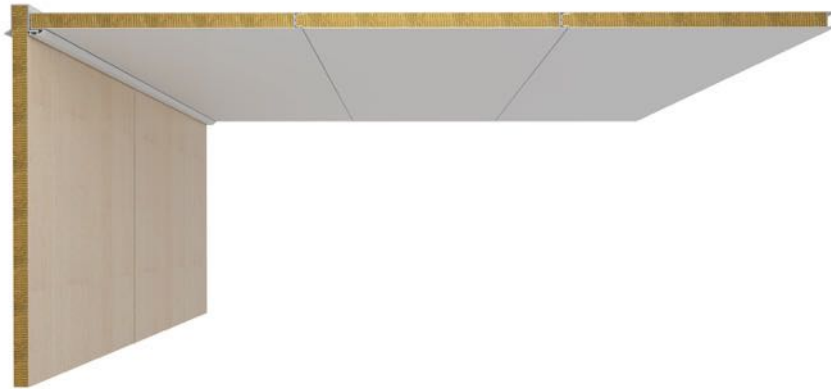


FLOATING FLOOR	
TYPE NO	JCP-DF2
FIRE CLASS	A-60
DIMENSION	450mm Width× Required Length (Max.3000 Length)
WEIGHT	28.2 kg/m ²
SOUND REDUCTION	51dB
THERMAL TRANSMITTANCE	0.48 Kcal/m ² h°C
SURFACE FINISH	Galvanized
CORE MATERIALS	Rock Wool
THICKNESS	52.5mm

Accommodation Paneling System

A TYPE CEILING PANEL

TYPE NO	JCP-C8	JCP-C2
FIRE CLASS	B-15	B-15
DIMENSION	550mm Width× Required Length (Max.3000 Length)	
WEIGHT	18.6 kg/m ²	15.7 kg/m ²
SOUND REDUCTION		
THERMAL TRANSMITTANCE	0.40 Kcal/m ² h°C	0.92 Kcal/m ² h°C
SURFACE FINISH	PVC/PET/HL-3 film or galvanized	
CORE MATERIALS	Rock Wool	Rock Wool
THICKNESS	50mm	25mm



D TYPE CEILING PANEL

TYPE NO	JCP-C6B	JCP-C6
FIRE CLASS	B-15	B-0
DIMENSION	275+25mm Width× Required Length (Max.6000 Length)	
WEIGHT	13.6 kg/m ²	9.7 kg/m ²
SOUND REDUCTION	35dB	31dB
THERMAL TRANSMITTANCE	0.48 Kcal/m ² h°C	0.96 Kcal/m ² h°C
SURFACE FINISH	PVC/PET/HL-3 film or galvanized	
CORE MATERIALS	Rock Wool	Rock Wool
THICKNESS	25+25mm	25mm

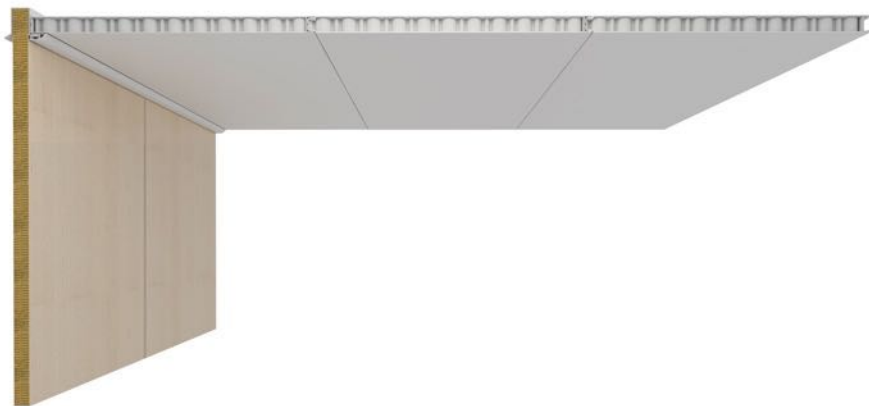


A TYPE ALUMINUM HONEYCOMB CEILING PANEL

TYPE NO	JCP-C2-L	JCP-C3-L
FIRE CLASS	B-0	B-0
DIMENSION	600/550mm Width× Required Length (Max.3000 Length)	
WEIGHT	11.3 kg/m ²	10.9 kg/m ²
SOUND REDUCTION		
THERMAL TRANSMITTANCE	3.25 Kcal/m ² h°C	3.25 Kcal/m ² h°C
SURFACE FINISH	PVC/PET/HL-3 film or galvanized	
CORE MATERIALS	Aluminum Honeycomb	Aluminum Honeycomb
THICKNESS	30mm	25mm

SQUARE CEILING PANEL

TYPE NO	JCP-C7	JCP-C7
FIRE CLASS	B-15	B-0
DIMENSION	600*600mm Width× Length	
WEIGHT	9.7 kg/m ²	7.9 kg/m ²
SOUND REDUCTION		
THERMAL TRANSMITTANCE	0.48 Kcal/m ² h°C	0.98 Kcal/m ² h°C
SURFACE FINISH	PVC/PET/HL-3 film or galvanized	
CORE MATERIALS	Rock Wool	Rock Wool
THICKNESS	50mm	30mm



Accommodation Fireproof Door System

A-60 CLASS SINGLE-LEAF FIRE DOOR

TYPE NO	CGFM-1	CGFM-1X	CGFM-1H
FIRE CLASS	A-60	A-60	A-60
DIMENSION	2400*1200	2100*1000	2200*950
DOOR LEAF	PVC/PET/HL-3 film or galvanized		
DOOR FRAME	Powder Painted Steel/SUS		
DOOR-LEAF THICKNESS	40mm	40mm	40mm
DOOR LEAF ACCESSORIES	Vision Window 400*400, Fire Hose port 150*150, Escape Louver 540*440		
CORE MATERIALS	Fireproof Board		



A-60 CLASS DOUBLE-LEAF FIRE DOOR

TYPE NO	CGFM-1A
FIRE CLASS	A-60
DIMENSION	2200*2000
DOOR LEAF	PVC/PET/HL-3 film or galvanized
DOOR FRAME	Powder Painted Steel/SUS
DOOR-LEAF THICKNESS	50mm
CORE MATERIALS	Fireproof Board



A-15/A-0 CLASS SINGLE-LEAF FIRE DOOR

TYPE NO	CGFM-2	CGFM-2X
FIRE CLASS	A-15/A-0	A-0
DIMENSION	2400*1200	2100*1000
DOOR LEAF	PVC/PET/HL-3 film or galvanized	
DOOR FRAME	Powder Painted Steel/SUS	
DOOR-LEAF THICKNESS	40mm	40mm
DOOR LEAF ACCESSORIES		
CORE MATERIALS	Rock Wool	



B-15 CLASS SINGLE-LEAF FIRE DOOR

TYPE NO	CGFM-3
FIRE CLASS	B-15
DIMENSION	2100*950
DOOR LEAF	PVC/PET/HL-3 film or galvanized
DOOR FRAME	Powder Painted Steel/SUS
DOOR-LEAF THICKNESS	40mm
DOOR LEAF ACCESSORIES	Vision Window 400*400, Fire Hose port 150*150, Escape Louver 540*440
CORE MATERIALS	Rock Wool



Accommodation Fireproof Door System

B-15 CLASS DOUBLE-LEAF FIRE DOOR	
TYPE NO	CGFM-3A
FIRE CLASS	B-15
DIMENSION	2100*1900
DOOR LEAF	PVC/PET/HL-3 film or galvanized
DOOR FRAME	Powder Painted Steel/SUS
DOOR-LEAF THICKNESS	40mm
DOOR LEAF ACCESSORIES	Vision Window 400*400, Fire Hose port 150*150, Escape Louver 540*440
CORE MATERIALS	Rock Wool

